

RESOLUTION NO. 2015-06-02

**RIVERDALE PEAKS II METROPOLITAN DISTRICT
RESOLUTION REGARDING THE AMENDMENT OF THE DISTRICT'S
RULES AND REGULATIONS**

A. Riverdale Peaks II Metropolitan District, Adams County, Colorado (the "District"), is a quasi-municipal corporation and political subdivision of the State of Colorado; and

B. Pursuant to Section 32-1-1001(1)(m), C.R.S., the District has adopted rules and regulations (the "Rules and Regulations"); and

C. The District expressly reserved the right to make any lawful addition and/or revisions in the Rules and Regulations; and

D. The District has determined that it is necessary to delete pages 1, 2, 4 and 5 of EXHIBIT C – DESIGN STANDARDS to the Rules and Regulations; and replace said pages with the revised pages 1, 2, 4 and 5 attached hereto as Exhibit A and incorporated by reference.

NOW, THEREFORE, BE IT RESOLVED by the Board of Directors of Riverdale Peaks II Metropolitan District as follows:

1. Capitalized terms not otherwise defined herein have the meanings ascribed to them in the Rules and Regulations.

2. Effective June 10, 2015, pages 1, 2, 4 and 5 of EXHIBIT C – DESIGN STANDARDS to the Rules and Regulations shall be deleted and replaced with the revised pages 1, 2, 4 and 5 attached hereto as Exhibit A and incorporated by reference.

APPROVED AND ADOPTED this 10th day of June, 2015

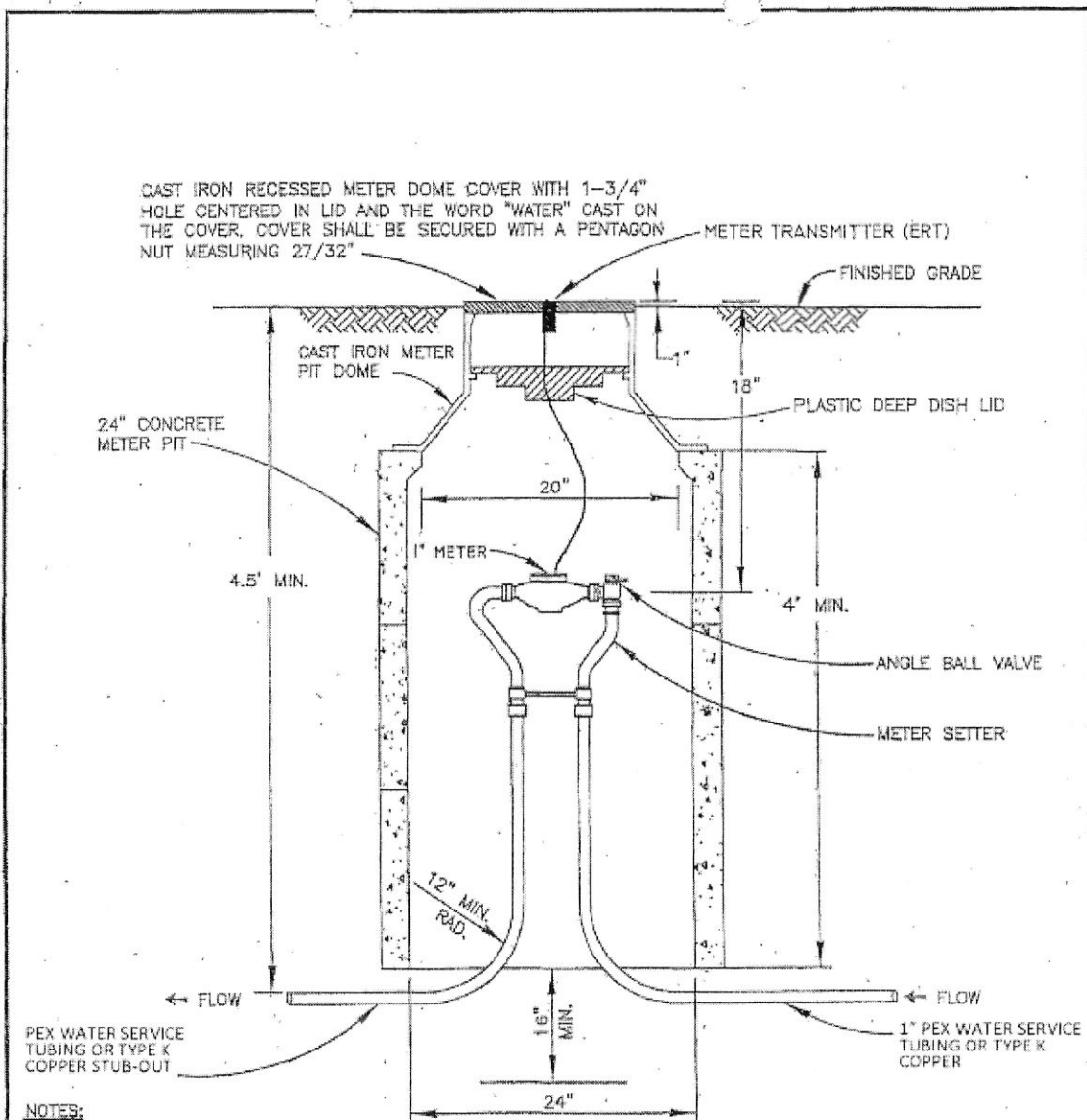
RIVERDALE PEAKS II METROPOLITAN
DISTRICT

By: Bob Bat
Its: President

Attest:

By: J. Pherson
Its: Secretary

EXHIBIT A



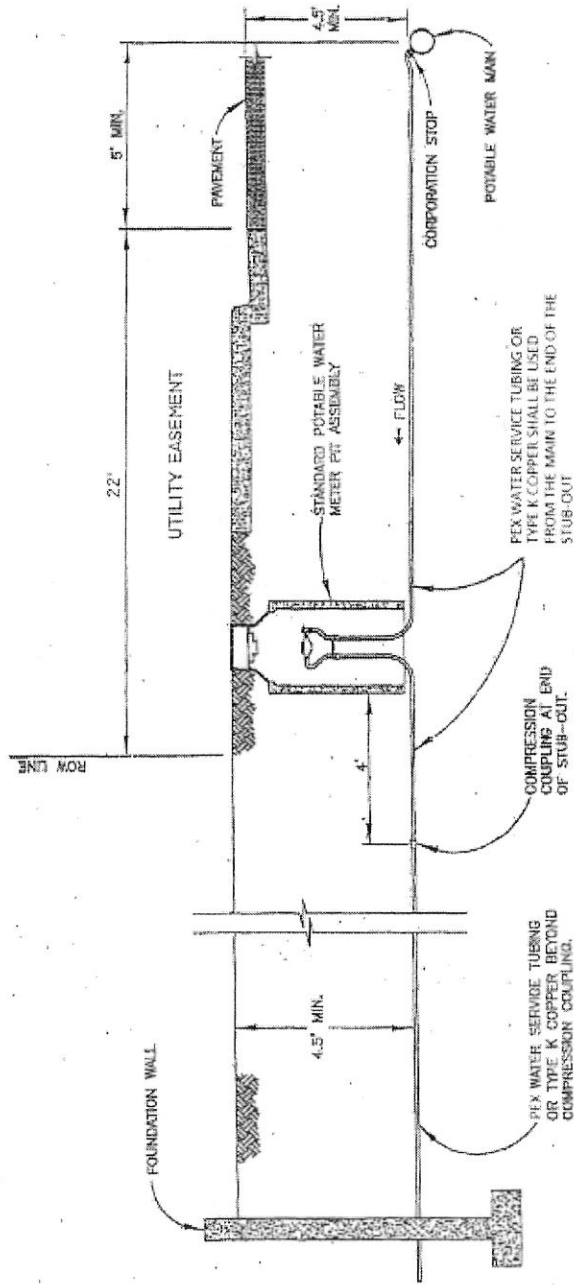
NOTES:

1. THE INNER FROST LID SHALL BE A PLASTIC DEEP DISH LID WITH PRE-DRILLED DRAIN HOLE.
2. IN LIEU OF A 24" DIAMETER CONCRETE METER PIT, A 48" HIGH, 24" DIAMETER PLASTIC PIT WITH 20" DIAMETER TOP OPENING WILL BE ACCEPTABLE. PLASTIC BASES SHALL BE IN CONFORMANCE WITH THE DISTRICT'S DESIGN STANDARDS AND SPECIFICATIONS.
3. TRACER WIRE SHALL BE TERMINATED IN EACH METER PIT BY WRAPPING THE WIRE THREE TIMES AROUND THE METER SETTER CROSS-BRACE.
4. NO ROCK SHALL BE ALLOWED IN POTABLE WATER METER PITS.
5. PEX MATERIAL SHALL BE CROSS-LINKED PIPING MADE FROM HIGH DENSITY POLYETHYLENE (HDPE) IN ACCORDANCE WITH ASTM STANDARD F877.

	<p>RIVERDALE PEAKS NO. 2 METROPOLITAN DISTRICT</p>	
<p>POTABLE WATER METER PIT</p>		<p>1</p>

NOTES:

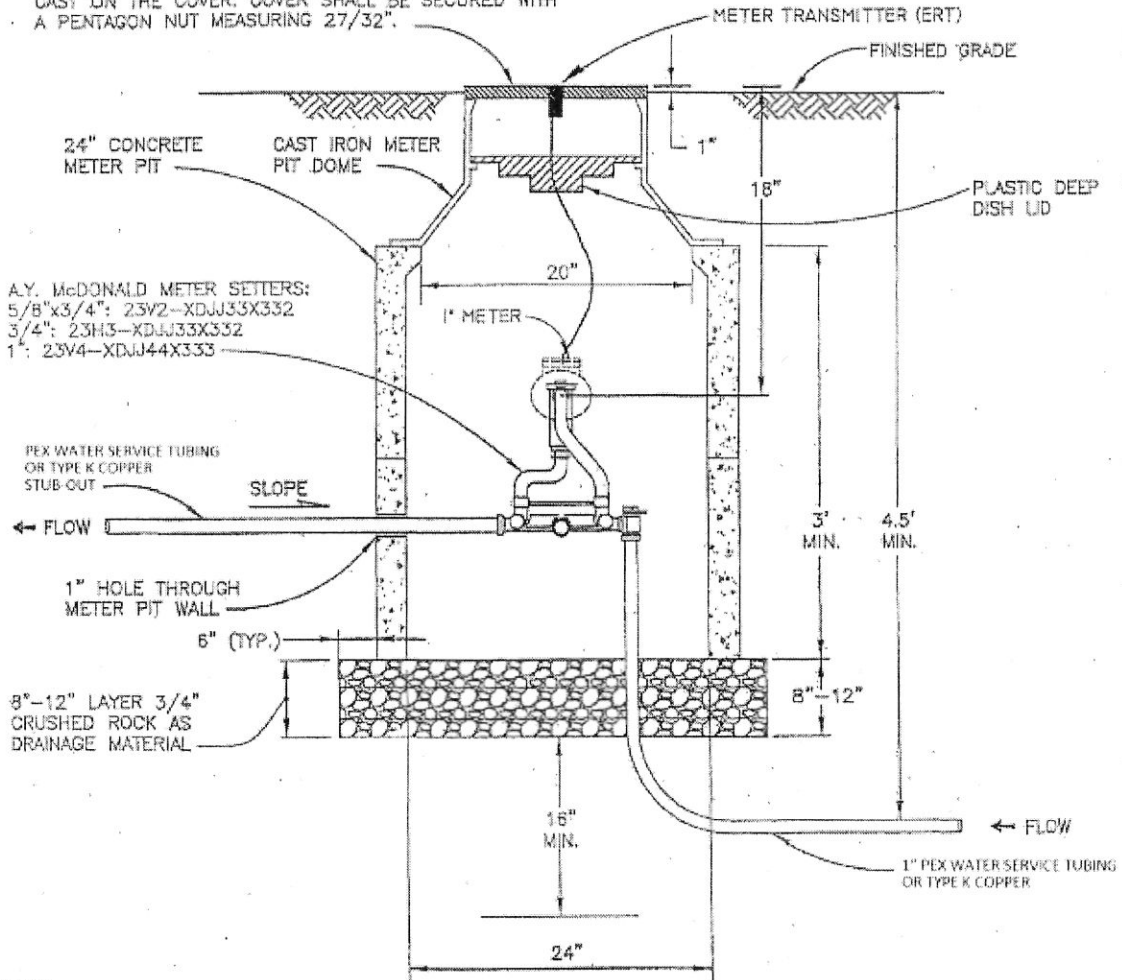
1. ALL SERVICE LINE WORK FROM THE MAIN TO THE BUILDING SHALL BE INSTALLED BY THE CONTRACTOR AND INSPECTED BY THE DISTRICT. PRIOR TO BACKFILLING, ALL PORTIONS OF THE SERVICE LINE TRENCH SHALL BE FILLED WITH SQUEEGEE TO A DEPTH OF 6" OVER THE TOP OF THE SERVICE LINE.
2. TRACER WIRE SHALL BE EXTENDED FROM THE MAIN ALONG THE SERVICE LINE AND BE TERMINATED IN THE METER PIT.
3. ALL PORTIONS OF SERVICE LINE FROM THE MAIN TO THE BUILDING SHALL BE CONTINUOUS WITHOUT SPLICES OR FITTINGS EXCEPT FOR THE COMPRESSION COUPLING AT THE END OF THE SUB-OUT AND CONNECTIONS TO THE METER SETTER. SWEAT CONNECTIONS AND FITTINGS ARE STRICTLY PROHIBITED ALONG THE SERVICE LINE, INCLUDING METER PIT ASSEMBLIES.
4. PEX MATERIAL SHALL BE CROSS-LINKED PIPING MADE FROM HIGH DENSITY POLYETHYLENE (HDPE) IN ACCORDANCE WITH ASTM STANDARD B77.



RIVERDALE PEAKS NO. 2
 METROPOLITAN DISTRICT
 POTABLE SERVICE LINE INSTALLATION

2

CAST IRON CAP-TYPE METER DOME COVER WITH 1-3/4"
HOLE CENTERED IN LID AND THE WORD "IRRIGATION"
CAST ON THE COVER. COVER SHALL BE SECURED WITH
A PENTAGON NUT MEASURING 27/32".



NOTES:

1. THE INNER FROST LID SHALL BE A PLASTIC DEEP DISH LID WITH PRE-DRILLED DRAIN HOLE.
2. IN LIEU OF A 24" DIAMETER CONCRETE METER PIT, A 36" HIGH, 24" DIAMETER PLASTIC PIT WITH 20" DIAMETER TOP OPENING WILL BE ACCEPTABLE. PLASTIC BASES SHALL BE IN CONFORMANCE WITH THE DISTRICT'S STANDARD SPECIFICATIONS.
3. TRACER WIRE SHALL BE TERMINATED IN EACH METER PIT BY WRAPPING THE WIRE THREE TIMES AROUND THE METER SETTER CROSS-BRACE.
4. PEX MATERIAL SHALL BE CROSS-LINKED PIPING MADE FROM HIGH DENSITY POLY ETHYLENE (HDPE) IN ACCORDANCE WITH ASTM STANDARD F877.

RIVERDALE PEAKS NO. 2 METROPOLITAN DISTRICT		4
IRRIGATION WATER METER PIT		

NOTES:

1. ALL SERVICE LINE WORK FROM THE MAIN UP TO AND INCLUDING THE BACKFLOW PREVENTER SHALL BE INSTALLED BY THE CONTRACTOR AND INSPECTED BY THE DISTRICT PRIOR TO BACKFILLING. ALL PORTIONS OF THE SERVICE LINE TRENCH SHALL BE FILLED WITH SQUEEGEE TO A DEPTH OF 6" OVER THE TOP OF THE SERVICE LINE.
2. TRACER WIRE SHALL BE EXTENDED FROM THE MAIN ALONG THE SERVICE LINE AND BE TERMINATED IN THE METER PIT.
3. ALL PORTIONS OF SERVICE LINE FROM THE MAIN TO THE BACKFLOW PREVENTER SHALL BE CONTINUOUS WITHOUT SPICES OR FITTINGS EXCEPT FOR THE 90° COUPLING AND CONNECTIONS TO THE METER SETTER AND STOP-AND-WASTE VALVE. SWEAT CONNECTIONS AND FITTINGS ARE STRICTLY PROHIBITED ALONG THE SERVICE LINE.
4. BACKFLOW PREVENTION DEVICES SHALL BE IN ACCORDANCE WITH THE DISTRICT'S "CROSS-CONNECTION CONTROL AND BACKFLOW CONTROL POLICY REGULATIONS."
5. SPRINKLER SYSTEMS BEYOND THE BACKFLOW PREVENTER SHALL BE THE RESPONSIBILITY OF THE PROPERTY OWNER.
6. PEX MATERIAL SHALL BE CROSS LINKED PIPING MADE FROM HIGH DENSITY POLYETHYLENE (HDPE) IN ACCORDANCE WITH ASTM STANDARD F877.

RIVERDALE PEAKS NO. 2
METROPOLITAN DISTRICT
IRRIGATION SERVICE LINE INSTALLATION

5

